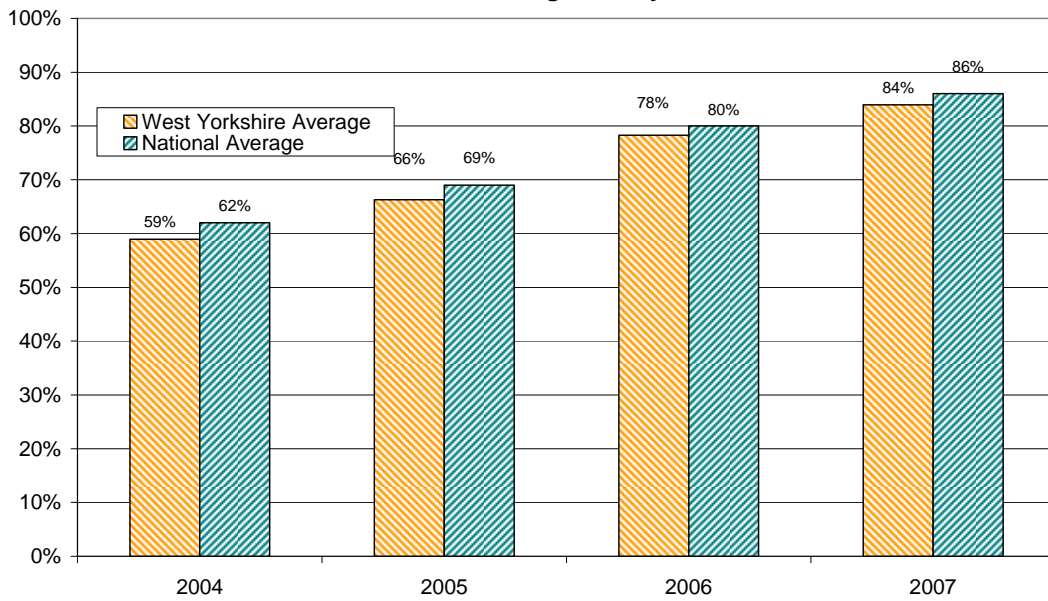
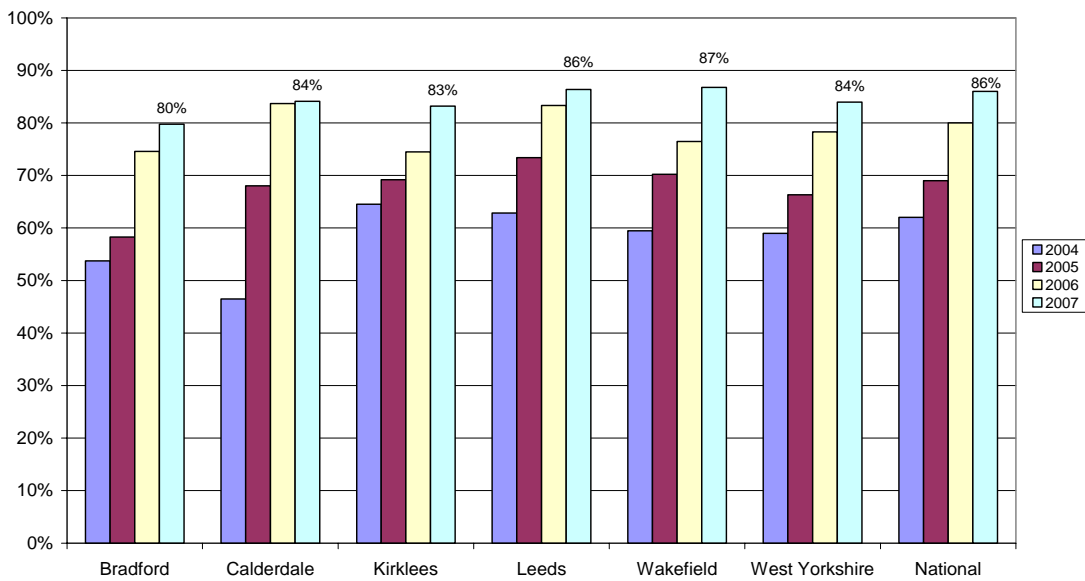


2 Hours High Quality PE

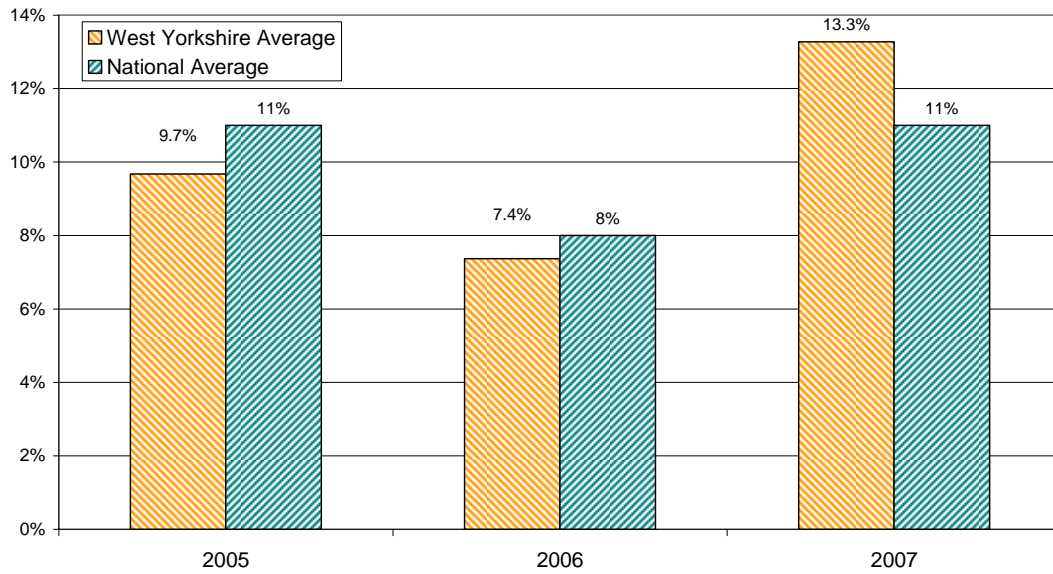


Percentage of Pupils taking part in 2 Hours PE

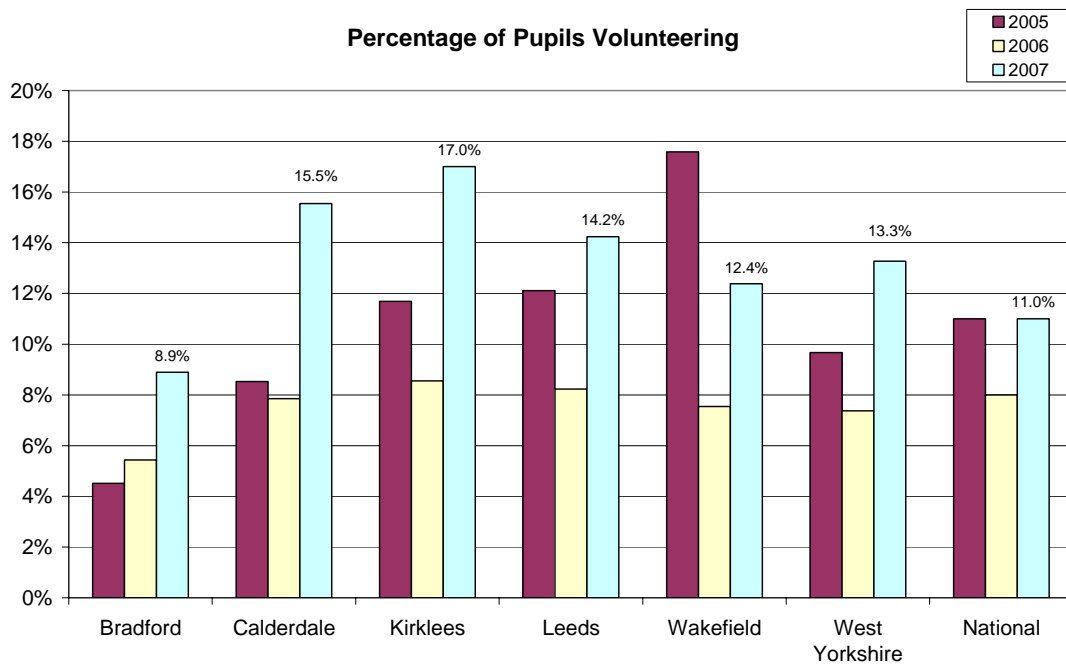


	2004	2005	2006	2007
Bradford	54%	58%	75%	80%
Calderdale	46%	68%	84%	84%
Kirklees	65%	69%	75%	83%
Leeds	63%	73%	83%	86%
Wakefield	59%	70%	76%	87%
West Yorkshire	59%	66%	78%	84%
National	62%	69%	80%	86%

Percentage of Pupils Volunteering

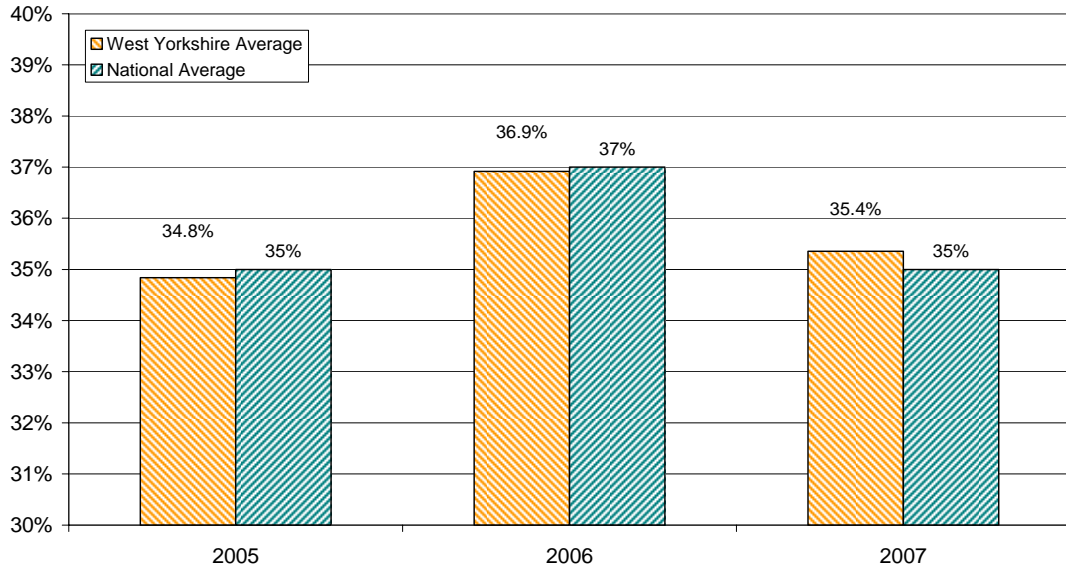


Percentage of Pupils Volunteering

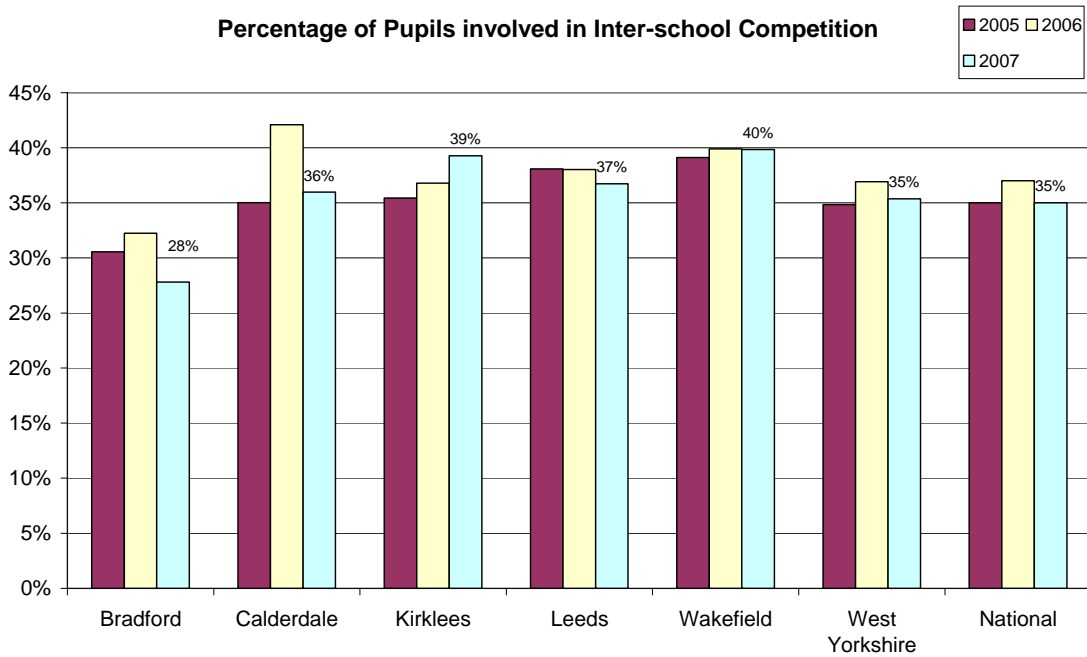


	2005	2006	2007
Bradford	5%	5%	9%
Calderdale	9%	8%	16%
Kirklees	12%	9%	17%
Leeds	12%	8%	14.2%
Wakefield	18%	8%	12.4%
West Yorkshire	10%	7%	13.3%
National	11%	8%	11%

Percentage of Pupils involved in Inter-school Competition

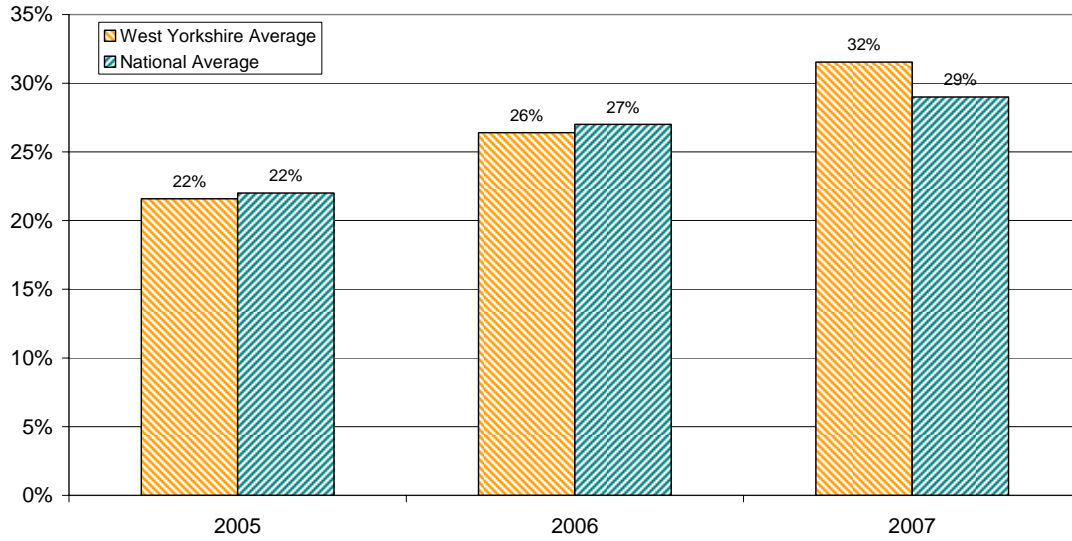


Percentage of Pupils involved in Inter-school Competition

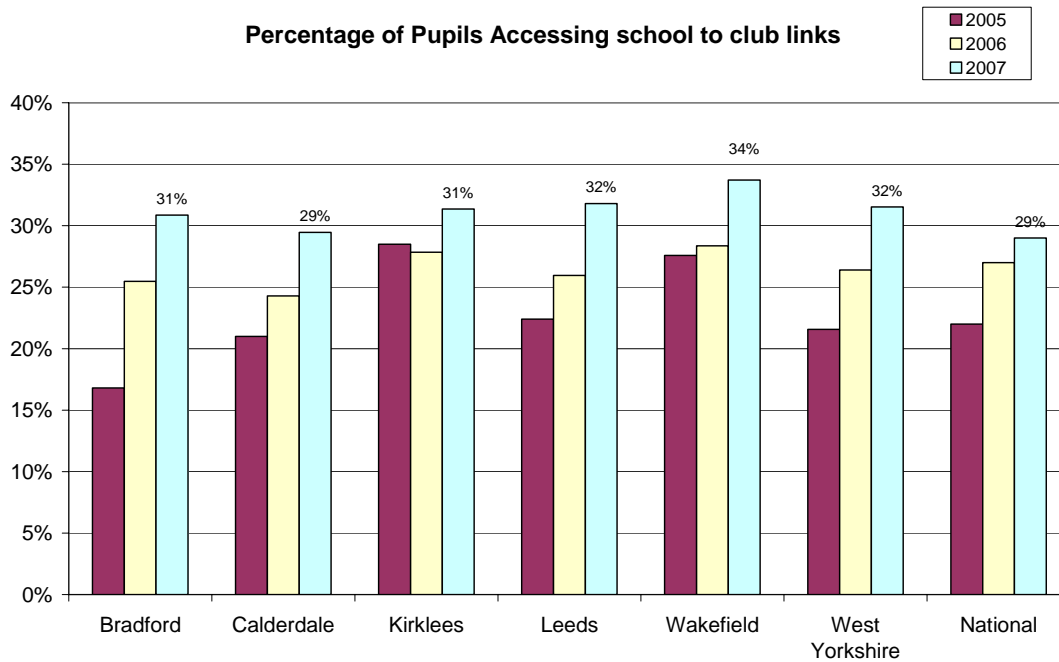


	2005	2006	2007
Bradford	31%	32%	28%
Calderdale	35%	42%	36%
Kirklees	35%	37%	39%
Leeds	38%	38%	37%
Wakefield	39%	40%	40%
West Yorkshire	35%	37%	35%
National	35%	37%	35%

**Percentage of Pupils who have Participated at a club with a Link to the school
(School - Club Links)**



Percentage of Pupils Accessing school to club links



	2005	2006	2007
Bradford	17%	25%	31%
Calderdale	21%	24%	29%
Kirklees	29%	28%	31%
Leeds	22%	26%	32%
Wakefield	28%	28%	34%
West Yorkshire	22%	26%	32%
National	22%	27%	29%